



2026 - COACH HOUSE THEATRE, MALVERN



25TH JULY - 30TH AUGUST 2026

With grateful thanks to

THE ELMLEY FOUNDATION

Malvern Hills
District Council

FRIENDS OF THE
COACH HOUSE
THEATRE



A CELEBRATION OF CREATION: WELCOME TO OUR SECOND SEASON!

The Coach House Theatre is delighted to welcome you back for our second Malvern Ink & Curtain Festival.

Following a spectacular debut, we've assembled an even more diverse and thrilling programme. This year, we celebrate a stunning tapestry of new writing, gripping drama, music, children's theatre, witty comedy, and beloved classics. Our stage will resonate with everything from Shakespeare and Van Gogh to the plucking of a harp and rock and roll.

We've also a special theatre open day, a series of fascinating talks, poetry, a wonderful taster session from our local youth theatre group Pop In Performers, a mask workshop and a spooky day of ghostly fun for kids!

We are also proud to showcase an ongoing exhibition of talented local artists displayed in the welcoming Barry Jackson Room for the festival's duration.

We invite you to join us under the summer sun from July 25th to August 30th for a warm welcome and a truly spectacular season!

Chris Bassett MBE, Executive Trustee, Coach House Theatre

On a Role
presents

EMMELINE PANKHURST - ANGEL or ANARCHIST?

Written by Chris Jaeger



*Starring
Liz Grand*



This powerful onewoman show, starring acclaimed actress **Liz Grand**, brings to life the extraordinary story of **Emmeline Pankhurst**, one of the most influential and iconic British women in history. A tireless champion of women's rights, Pankhurst led the fight for women to gain the vote, enduring multiple imprisonments and undertaking numerous hunger strikes in the name of equality.

After nearly thirty years of being ignored by Parliament, she famously turned to Direct Action. Under her leadership, the Suffragettes escalated their campaign - throwing stones at politicians, setting fire to letter boxes, damaging property, and chaining themselves to railings - to make their voices impossible to ignore.

Although their determination ultimately succeeded, the path to victory came at a great personal cost to many brave women. And despite her pivotal role, Emmeline herself was not universally admired. Some argued that the more confrontational methods delayed, rather than accelerated, progress.



Sat 25th July at 3pm.& 7pm, Sun 26th July at 3pm
Tickets £15.68 (incl. 12% booking fee)
Box Office: 01684 892277
www.malvern-theatres.co.uk



THEATRE OPEN DAY



THEATRE TOUR



KIDS
DRESS UP



TRY THEATRE
LIGHTING



GET
INVOLVED



COACH HOUSE THEATRE,
MALVERN



Mon 27th July, 10am - 4pm
Free entry. Come along!



'AN EXCEPTIONAL PLAY'
THEATRE AND ART REVIEWS



'A MESMERISING PERFORMANCE'
STAGETALK MAGAZINE

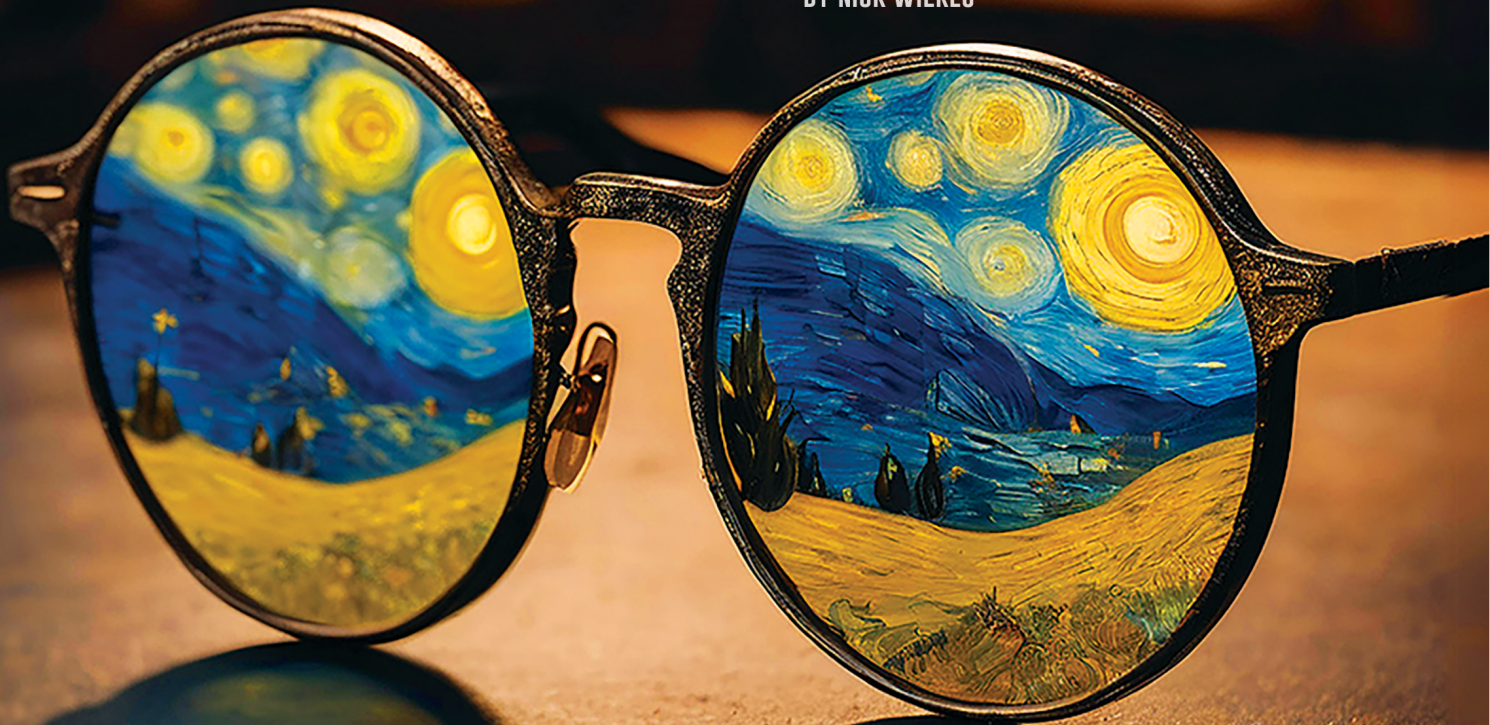


'AN IMPRESSIVE FEAT'
BRITISH THEATRE GUIDE

MALVERN BARD PRESENTS

WHEN
Vincent
MET
JOHN

BY NICK WILKES



VINCENT VAN GOGH DIED IN 1890, JOHN LENNON DIED IN 1980, BOTH OF GUNSHOT WOUNDS TO THE CHEST
BUT IMAGINE WHAT MIGHT HAVE HAPPENED HAD THE TWO GREATEST ARTISTS OF THEIR TIME MET...



Tues 28th - Wed 29th July at 7.30pm
Wed matinee at 2.30pm
Tickets £16, Box Office 01684 892277
malvern-theatres.co.uk





Sponsored by
The Great Malvern
Hotel

Friday 31st July 2026

Poetry of Hills & Poetry of Water

Two workshops at
The Coach House Theatre,
Malvern, WR14 3HA
in the Barry Jackson Room

 11am-12.30pm &
1.30-3pm

 Share & write
poetry together
in these 90 minute workshops

£12 each or
both for £20



Fri 31st July in the Barry Jackson Room
11am - 12.30pm, and 1.30pm - 3pm
£12 each, or both workshops for £20
(incl. 12% booking fee)

Box Office 01684 892277 - malvern-theatres.co.uk



Swan Theatre
Amateur Company

CHILDREN'S THEATRE

CAPTAIN CRAB'S TREASURE

by Kate Chester-Lamb

**A lively tale of Pirates, Parrots and a Treasure Chest.
Jack and his mom have a treasure to guard but Short John
Gold the Pirate intends to steal it. Will Mr Friday help them?
A fun tale for children age 2 to 9 in Priory Park.**



Sat 1st August at 10.30am and 2pm
Tickets £5, family ticket £16, under 2's free
(incl. 12% booking fee)
Box Office 01684 892277 - malvern-theatres.co.uk

MALVERN THEATRE PLAYERS

RESIDENT COMPANY OF THE COACH HOUSE THEATRE PRESENT

Why Knot?

A new play by Steve Burford



Love is love. But can there be a "happily ever after" without an "I do" at the start?

Dave and Vince have been a couple for over ten years.
Life is good and as straightforward as it gets for gay men.

Until Dave brings home Tony, a heart-broken, straight friend,
who raises some tricky questions...

A comedy that faces the difficult questions
and asks - "Why Knot?"



Wed 5th - Sat 8th August
Nightly at 7.30pm, Sat Mat at 2.30pm
Tickets £16 (incl. 12% booking fee)
Box Office 01684 892277 - malvern-theatres.co.uk

THREE INSPIRING TALKS

THEATRE • HISTORY • PEOPLE • PLACE

Celebrating theatre in Birmingham and Malvern



1

A PIONEERING THEATRE FESTIVAL – MALVERN 1929–1939 *by Jim Kelly*

The story of Malvern's innovative theatre festival, initiated by Sir Barry Jackson and shaped by Roy Limbert and Stephanie Davison. A major attraction that brought visitors, created audiences for Shaw and new drama, and deserves recognition as a groundbreaking precursor to later theatre festivals.



2

BERNARD SHAW AND THE BRITISH REGIONAL REPERTORY MOVEMENT

by Soudabeh Ananisarab

Explore Shaw's vital, long-overlooked role in the repertory movement, including the Birmingham Repertory Theatre and the Malvern Festival. A presentation by Dr. Ananisarab with original dramatic scenes inspired by his book, with Jonas Cemm as Shaw and featuring student actors from the Royal Birmingham Conservatoire under his direction.



3

LAURA KNIGHT'S THEATRE: PERFORMANCE, PEOPLE AND PLACE

by Claire Cochrane

Discover Laura Knight's vivid depictions of performance and the people and places behind it, with a focus on Sir Barry Jackson— founder of the Birmingham Repertory Company and the Malvern Festival—and the remarkable 50-year friendship that gave her unique access.



Sun 9th August

Talk 1 - 10am, Talk 2 - 2.30pm, Talk 3 - 7pm

Tickets £10 per talk (incl. 12% booking fee)

Box Office 01684 892277 - malvern-theatres.co.uk

TWO CHAIRS

By Ben McVite - Directed by Jane Lush

In the cold stillness of a psychiatric clinic, two men sit across from one another.

One appears to hold authority, guiding the conversation with measured precision. The other sits quietly, offering little, yet seeming to understand far more than he should. As the exchange unfolds the balance between them begins to shift, and the room itself feels less certain.

A young girl named Lucy Parker lingers at the edges of their conversation, her presence felt long before her story is understood. Memories fracture, truths slip, and each question opens the door to something darker. What begins as a clinical assessment becomes an unsettling struggle over power, identity, and the stories we tell to survive.

Two Chairs is a tense psychological thriller that draws its audience into a world of unease and ambiguity, where nothing is quite what it seems, and the most devastating truth waits in the silence.



Perception Is Reality



Tuesday 11th August at 2:30pm & 7:30pm
Tickets £15 (incl. 12% booking fee)
Box Office 01684 892277 - malvern-theatres.co.uk

Slackline Productions presents

BURN BABY BURN

LA Inferno

Written & performed by Erin Hunter



LA is burning.

When two old Angelenos lose everything, they must navigate overwhelming grief, toxic ash and paperwork purgatory surrounded by clueless celebs, soulless politicians and real estate vampires. 6000 miles away, their (very) anxious daughter is trying really hard not to unravel.

Like any good performer, Hunter has transformed personal tragedy into heartbreaking and hilarious theatre. It follows her critically acclaimed debut solo show. Written and performed by Erin Hunter in partnership with Slackline Productions, champion of women 35+.



Wed 12th August at 7.30pm
Tickets £18, £16 concs. (incl. 12% booking fee)
Box Office 01684 892277 - malvern-theatres.co.uk
Show followed by 30 minute panel on the local impact of climate change



★ FREE ★ SUMMER THEATRE WORKSHOP!


AGES 8-16 | ★ NO EXPERIENCE NEEDED ★


TRY OUT:

- ★ Acting
- ★ Singing
- ★ Dance
- ★ Games & Improvisation



Pop In,
Stand Out

 **THURSDAY 13TH AUGUST**

 **THE COACH HOUSE THEATRE,
MALVERN WR14 3HA**

CHOOSE A 90-MINUTE SESSION:

10:30am-
12:00pm

1:00pm-
2:30pm

3:00pm-
4:30pm


★
BUILD CONFIDENCE
Step on stage and
believe in yourself.


★
MAKE NEW FRIENDS
Meet new people and
be part of the team.


★
BE CREATIVE & HAVE FUN
Express yourself, try
new things and enjoy!

**BOOK YOUR
FREE PLACE
TODAY!** ★



 popinperformers@yahoo.com

 popinperformers.co.uk

 facebook.com/popinperformers

The Oil and Thread Exhibition

A CELEBRATION OF ART & CRAFT



Anthea Grenfell Nakorn



Julia Heron



Anthony McKerr



Jain McKay



The Artisan Spinner



Gilly Hemmer

ART DEMONSTRATIONS



Jain McKay – Oil painted portraits
Tuesday 4th August – 11am–4pm



Anthea Grenfell Nakorn – Techniques for depicting movement and dance through torn paper collage
Wednesday 5th August – 2.30–4.30pm
Wednesday 12th August – 2.30–4.30pm



Julia Heron – Gelli plate printing
Thursday 13th August – 2–4pm



Anthony McKerr – Stone carving or Dry point preparation on acrylic plates (weather dependent)

Tuesday 18th August – 10.30am–12.30pm
Thursday 20th August – 10.30am–12.30pm



The Artisan Spinner – Drop spindle spinning
Saturday 22nd August – 12–2pm

Throughout
July and August

Barry Jackson Room
at the
Coach House Theatre

FREE ENTRY



ART



CRAFT



COMMUNITY



CREATIVITY

Children's
Activity

Malvern

Ghost Detectives

Have you ever thought there might be ghosts and ghouls lurking in Malvern?

A weird feeling by Waitrose carpark?
A listless lull near the library?
A presence near the Post Office?

Then join two fully qualified* spook detectives this summer holiday and let's find out ... if you *daaaare!*

* University of Things that Go Bump in the Night

Ghost hunt
around
Malvern!

For families with children aged 6-11.
Each family must include at least one adult.
Starts & ends at the Coach House Theatre.
Features storytelling, craft & 30 min. walk.

Please bring sensible footwear,
water and sunscreen.



Saturday 15th August at 2pm, 4pm, 6pm, 8pm
Sunday 16th August at 2pm, 4pm, 6pm, 8pm
Each event lasts for 75mins

Tickets £6 per person (incl. 12% booking fee)

Please note that both adults and children require a ticket
Box Office 01684 892277 - malvern-theatres.co.uk



Wingbeat

by Emily Henry

We meet Jess and Elsie in the local pub.

Everything is the same as it was when they were sixteen and dreaming of leaving their small rural town for bigger and better things. But they're not sixteen anymore, they're not sat in a field drinking hooch and they never left. Beneath their reminiscing and the quiet ache for paths not taken lies something else. What does it take to be heard in a community bound by trust where everyone knows everyone? If each tiny decision shapes everything that follows, how can you know if you've done the right thing?

Wingbeat is a story of girlhood, silence and the cost of breaking it.



Mon 17th - Tues 18th August at 7.30pm
Tickets £8 (incl. 12% booking fee)
Box Office 01684 892277 - malvern-theatres.co.uk

Aaron Relf Emily Malvizis

*Love Works In
Mysterious Ways*

written by Emily Malvizis

LOVE WORKS IN MYSTERIOUS WAYS follows Elliot and Nora, two strong-willed classmates whose friendship is built as much on conflict as connection. After a falling out tears them apart, years pass before fate brings them back together. As old feelings resurface, they must confront the past, their fears, and the question of whether some relationships are meant for a second chance...



Wed 19th and Thurs 20th August at 7.30pm

Tickets £13 (incl. 12% booking fee)

Running time 1hr and 10 minutes.

Contains strong language, drug references, scenes of emotional upset.

Not suitable for persons aged 12 years and younger

CHRIS TUTTON AND LUCY NOLAN PRESENT

IMAGINARY LANDSCAPES

a poetry and harp recital

A captivating blend of haunting melodies,
soulful songs and stories that travel.



LUCY NOLAN
Harp

The music is directly inspired by Chris's poetry and ranges from free improvisation in Carnatic ragas and explorations of less conventional playing techniques on the harp to specially selected excerpts of music from folk songs by Catrina McKay to arrangements of music by Jean Sibelius. The resulting sound worlds are unique and designed to take listeners through the duo's many different 'Imaginary Landscapes'.

*"Magical and mesmerising...
An exquisite fusion of words and music"*

"An absolute gem"
Martin Denny, Windsor Arts Festival

*"This should be at the heart
of every festival"*
Andy Stuart, Rye Arts Festival



CHRIS TUTTON
Poet



Friday 21st August at 7pm
Tickets £14 (incl. 12% booking fee)
Box Office 01684 892277 - malvern-theatres.co.uk

A STAR WARS IMPROV SHOW: THE ONE-MAN MADE-UP MOVIE

ON TOUR
2026

Starring
JON HIPKISS



"A complete delight"
"Whole family loved it"
"Clever and inclusive"
"A fantastic show for Star Wars fans or not"

"Totally entertaining"
"Genuinely brilliant"
"Hilarious and fun with a highly skilled performer"
EdFringe.com Reviews



Sat 22nd August at 3pm and 7pm
Tickets £12, under 12's £10 (incl. 12% booking fee)
Box Office 01684 892277 - malvern-theatres.co.uk

MASK WORKSHOPS BY **VAMOS** THEATRE

Mask Performing for Young people

This engaging and fast-paced workshop introduces young people to mask performance in the style of Vamos Theatre, showing how to create characters, develop clarity in communication and devise original work. The workshop empowers young people to create their own mask theatre, get confident about devising and gain a better understanding of theatre vocabulary.

Revealing the Mask

Revealing the Mask is a workshop introducing adults to the art of mask performance. It's an engaging, creative, high energy and inspiring workshop that gives participants a thorough introduction to full mask and devising techniques, in the style of Vamos Theatre. Through games, exercises and shared exploration, the workshop introduces mask characterisation, mask physicality, mask techniques such as clocking, stillness and isolation, and ways to devise effectively and impactfully, helping to build confidence and understanding of non-verbal performance.



Mask Performing for Young people

24th August at 2pm – 4.30pm

For young people 12 years +

Tickets - £10 (incl. 12% booking fee)

Box Office 01684 892277 - malvern-theatres.co.uk

Revealing the Mask

24th August at 6pm – 8.30pm

Tickets £15 (incl. 12% booking fee)

For adults 18 +

Stratford Theatre Company
proudly present

Three Men in a Boat

(to say nothing of the dog)

adapted from the hilarious book by Jerome K. Jerome

Starring Giles Shenton

“the nearest thing
I've heard to
audio slapstick”

“seriously funny”
The Guardian

“a masterclass in
stagecraft &
delivery”

“timeless appeal”
The Independent

“95 mins of
pure delight”

“amazing, energetic
& totally engaging”



Tues 25th August at 7.30pm
Tickets £16.50 (incl. 12% booking fee)
Box Office 01684 892277 - malvern-theatres.co.uk

STRATFORD THEATRE COMPANY PROUDLY PRESENTS

DEAD ON CUE

SAME PLAY. SAME THEATRE. SAME DRESSING ROOM.

68 YEARS APART

"TIME IS OUT OF JOINT"

A NEW

GHOSTLY THRILLER

WRITTEN BY

MARK CAREY

(INTO THE BREACH & WHAT'S WRONG
WITH BENNY HILL?)



FROM THE PRODUCER OF
OLD HERBACEOUS
THREE MEN IN A BOAT
FAGIN?

"THERE ARE
MORE THINGS IN
HEAVEN AND EARTH..."

*A BRILLIANTLY CRAFTED THRILLER. CREEPILY CLAUSTROPHOBIC
ALL EXCELLENTLY DONE WITH PLENTY OF PITCH BLACK HUMOUR*



Wed 26th August at 7.30pm
Tickets £16.50 (incl. 12% booking fee)
Box Office 01684 892277 - malvern-theatres.co.uk



The Reimagined Orchestra

The Reimagined Orchestra presents *Elgar Reimagined*, a bold contemporary response to Edward Elgar's iconic *Enigma Variations*. Led by composer and multidisciplinary artist ENNÈ (Nakisha Swatton), the project transforms Elgar's idea of musical portraiture into a living reflection of today's creative community.

Bringing together an eclectic ensemble of performers from across the region, the work blends classical influences with diverse musical traditions, including Japanese Taiko drumming, Renaissance recorders, Americana-inspired strings, contemporary vocals and layered orchestration. Each collaboration contributes to a rich musical landscape shaped by community, identity and place.



Thurs 27th August at 7pm
Tickets £12 (incl. 12% booking fee)
Box Office 01684 892277 - malvern-theatres.co.uk

Belladonna

a new play by Sarah Hutton



Who put Bella
in the Wych Elm?

When an unknown woman's body is found inside a wych-elm tree in Hagley Woods during World War Two, a real-life mystery begins which remains unsolved to this day. A romantic assignation gone horribly wrong? A spy caught and executed? A victim of local witchcraft? Or just an ordinary woman in the wrong place at the wrong time?

What really happened to 'Bella'?



Fri 28th - Sat 29th August
Nightly at 7.30pm, Sat Mat at 2.30pm
Tickets £16 (incl. 12% booking fee)
Box Office 01684 892277, malvern-theatres.co.uk

If music be the food of love,
then some people are a bit... off.

TWELFTH NIGHT

BY WILLIAM SHAKESPEARE

HERE^{to}
THERE
productions

Shakespeare's much loved exploration of love, identity, deceit, and self-delusion. Shipwrecked in a foreign land Viola has to rely on her wits to survive whilst those around her lead each other a merry dance.

Join us amongst the nightclubs of Bermuda in 1962 as this fresh new take considers how we are often our own worst enemies, especially in matters of the heart.



Sun 30th August at 2.30pm and 7.30pm
Tickets £22.40 (incl. 12% booking fee)
Outdoor theatre in Priory Park
Box Office 01684 892277 - malvern-theatres.co.uk



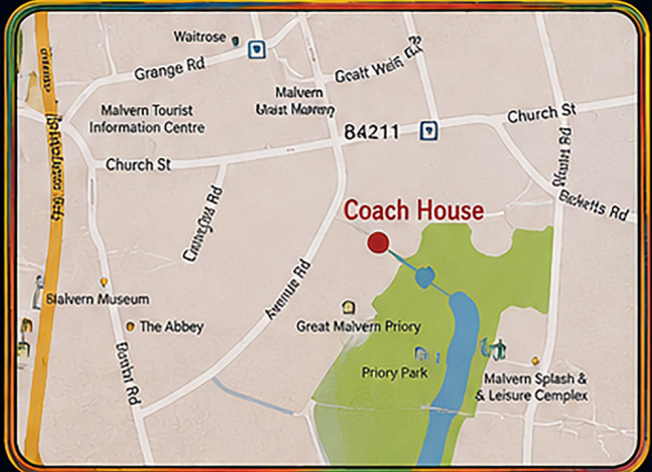
The Coach House AUDITORIUM



AUDITORIUM SEATING PLAN

1	2	3	4	5	E	7	8	9	10	11	12	13	14	15		
1	2	3	4		D	7	8	9	10	11	12	13	14	15	17	
1	2	3	4		C	7	8	9	10	11	12	13	14	15	16	17
1	2	3	4		B	7	8	9	10	11	12	13	14	15	16	17
U	2	3	4		A	7	8	9	10	11	12	13	14	15	16	U
	2	3	4	5	CC	7	8	9	10	11	12	13	14	15		

HOW TO FIND THE COACH HOUSE



For more details of the studio theatre, availability for hire and rates please contact Chris Bassett on:

☎ 01684 569011, or e-mail:
✉ chrisb_mtp@yahoo.co.uk

See also:
www.coachhousetheatre.co.uk

If you would like to be more involved with the Coach House, you could become a Friend of the Coach House Theatre. Application forms are available from the theatre or via the Coach House website above.



A CELEBRATION OF CREATION: WELCOME TO OUR SECOND SEASON!



DATE	COMPANY	TIME	PERFORMANCE
JULY			
Sat 25	On A Role	3.00pm 7.00pm	EMMELINE PANKHURST – ANGEL or ANARCHIST? EMMELINE PANKHURST – ANGEL or ANARCHIST?
Sun 26	On A Role	3.00pm	EMMELINE PANKHURST – ANGEL or ANARCHIST?
Mon 27	Coach House Theatre	10.00am – 4.00pm	Theatre Open Day
Tue 28	Malvernbard	7.30pm	When Vincent Met John
Wed 29	Malvernbard	2.30pm 7.30pm	When Vincent Met John When Vincent Met John
Fri 31	Catherine Norris	11.00am 1.30pm	Poetry workshops. "Ridge and Furrow" and "Language of the Hills"
AUGUST			
Sat 01	STAC	10.30am 2.00pm	Captain Crab's Treasure Captain Crab's Treasure
Wed 05	MTP	7.30pm	Why Knot?
Thur 06	MTP	7.30pm	Why Knot?
Fri 07	MTP	7.30pm	Why Knot?
Sat 08	MTP	2.30pm 7.30pm	Why Knot? Why Knot?
Sun 09	Coach House Theatre	10.00am 2.00pm 7.00pm	A PIONEERING THEATRE FESTIVAL – MALVERN 1929–1939 by Jim Kelly BERNARD SHAW AND THE BRITISH REGIONAL REPERTORY MOVEMENT by Soudabeh Ananiasana; LAURA KNIGHT'S THEATRE: PERFORMANCE, PEOPLE AND PLACE by Claire Cochrane
Tue 11	Ben McVite	2.30pm 7.30pm	Two Chairs Two Chairs
Wed 12	Erin Hunter	7.30pm	Burn, Baby, Burn
Thurs 13	PopIn Performers	10.30am 1.00pm 3.00pm	Youth Theatre taster Youth Theatre taster Youth Theatre taster
Sat 15	Hutton & Clarke	2.00pm 4.00pm 6.00pm 8.00pm	Malvern Ghost Detectives Malvern Ghost Detectives Malvern Ghost Detectives Malvern Ghost Detectives
Sun 16	Hutton & Clarke	2.00pm 4.00pm 6.00pm 8.00pm	Malvern Ghost Detectives Malvern Ghost Detectives Malvern Ghost Detectives Malvern Ghost Detectives
Mon 17	Emily Henry	7.30pm	Wingbeat
Tue 18	Emily Henry	7.30pm	Wingbeat
Wed 19	Emily Malvizis	7.30pm	Love Works In Mysterious Ways
Thurs 20	Emily Malvizis	7.30pm	Love Works In Mysterious Ways
Fri 21	Chris Tutton and Lucy Nolan	7.00pm	Imaginary Landscapes
Sat 22	Jonathan Hipkiss	3.00pm 7.00pm	A Star Wars Improv Show A Star Wars Improv Show
Mon 24	Vamos Theatre	2.00pm 6.00pm	Mask workshops – young people Mask workshops – adults
Tue 25	Giles Shenton Prods	7.30pm	Three Men In A Boat
Wed 26	Giles Shenton Prods	7.30pm	Dead on Cue
Thur 27	The Reimagined Orchestra	7.00pm	Elgar Reimagined
Fri 28	Sarah Hutton	7.30pm	Belladonna
Sat 29	Sarah Hutton	2.30pm 7.30pm	Belladonna Belladonna
Sun 30	Here To There Theatre	2.30pm 7.30pm	Twelfth Night Twelfth Night

OIL AND THREAD EXHIBITION THROUGHOUT THE FESTIVAL

All ticket prices include 12% booking fee unless otherwise stated

malvern-theatres.co.uk